

# LINK ASSOCIATES ANNUAL REPORT

2013-2014



**LINDA DUNSHEE**

**EXECUTIVE DIRECTOR**

**L**ink Associates changes lives!

Since its founding in 1956, Link Associates has worked tirelessly to champion the cause for individuals with intellectual disabilities and their families. We take our mission seriously "Providing Opportunities For Persons with Intellectual Disabilities to Achieve their Personal Goals".

Unlike 58 years ago, full inclusion in all areas of community and social life was a far off dream. Each year we stretch, and will continue the work to ensure there are full community integration opportunities for those we serve.



For decades we have worked with numerous partners across the county, across the state and across the country on behalf of individuals with intellectual disabilities and their families. Again this year, Link Associates assisted a record number of people. In many ways the year seems like a blur. When we are moving that fast, it is hard to find the time to fully comprehend the significance of all we've achieved. Instead, we are already focusing on the next goals. Years from now, when we have time to reminisce and reflect, we will realize our actions and perseverance helped to keep the service provision industry moving ahead. New challenges constantly inspires us to dig deeper and identify unique and creative solutions to real problems.

The Link Associates Board of Directors believes that this agency has a strong and supportive culture and we honor that culture. We have an incredible leadership team and the most exceptional direct support professional staff, who are excited by the challenges that lie ahead of us. We look forward to the celebrations that come as we work together to accomplish our shared vision for fully integrated community living. We will embrace the challenges ahead as we move forward and continue to build on a solid foundation established by those who came before us.

Link Associates will continue setting new and aggressive goals, but we can't reach these goals alone. I invite each of you, as a family member, business or friend, to make a commitment to help us improve the services we offer. This support can be in many forms such as offering feedback and suggestions, volunteering, nominating quality members to our board of directors, financial contributions, and remembering us in your planned giving. At Link Associates, we take very seriously the responsibility entrusted to us and we are excited to share with you the impact of your support in this annual report. I look forward to sharing another wonderful year at Link Associates with you!

A handwritten signature in cursive script that reads "Linda Dunshee". The ink is a dark grey color.

**Linda Dunshee, Executive Director**



# MANAGEMENT MEMBERS



LINDA DUNSHEE  
EXECUTIVE DIRECTOR



JAY BRUNS  
CORPORATE OPERATIONS  
DIRECTOR



BOB MUNGER  
IT DIRECTOR



STEVE O'BRIEN  
FINANCE DIRECTOR



JOAN OSBORN  
CASE MANAGEMENT  
DIRECTOR



VALERIE SCHWAGER  
SUPPORTED LIVING  
DIRECTOR



CINDY SPANN  
OUTREACH DIRECTOR



TIFFANY STEENBLOCK  
EMPLOYMENT/DAY  
PROGRAM DIRECTOR

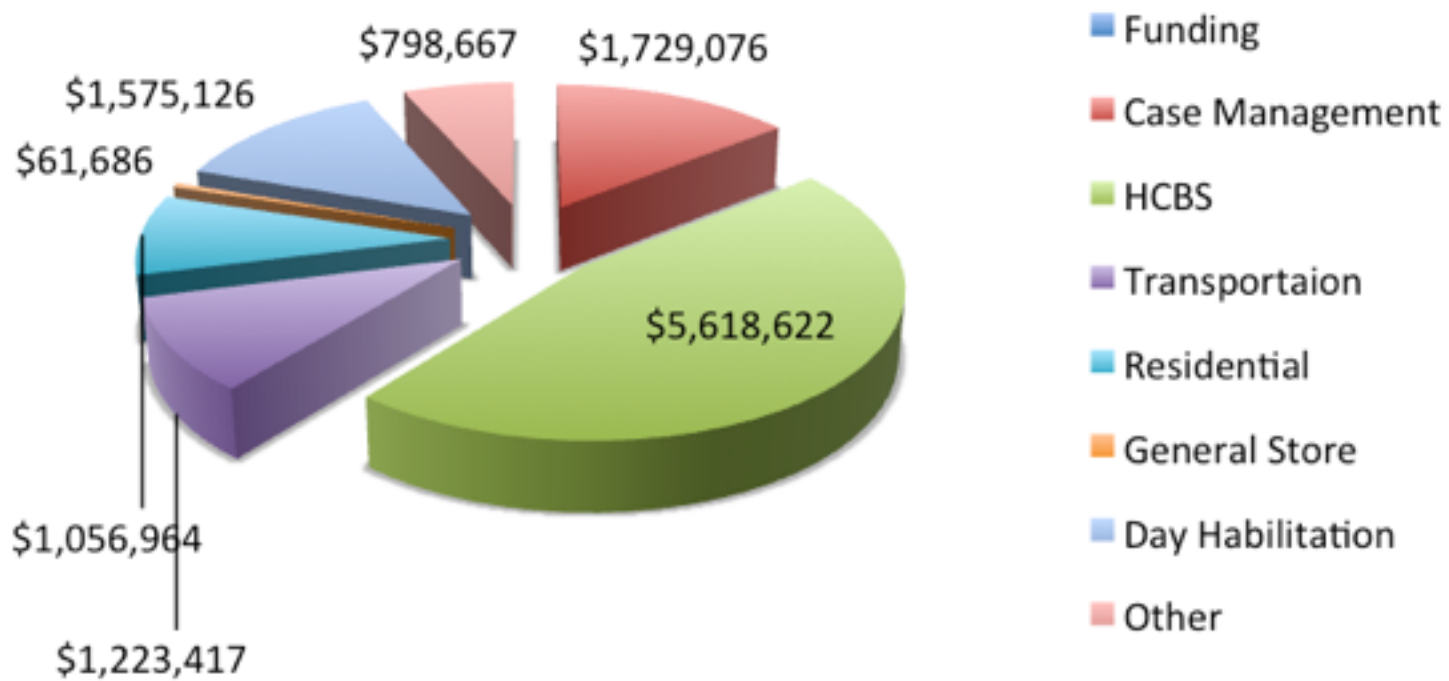


JIM WILKIE  
FLEET & FACILITIES  
DIRECTOR

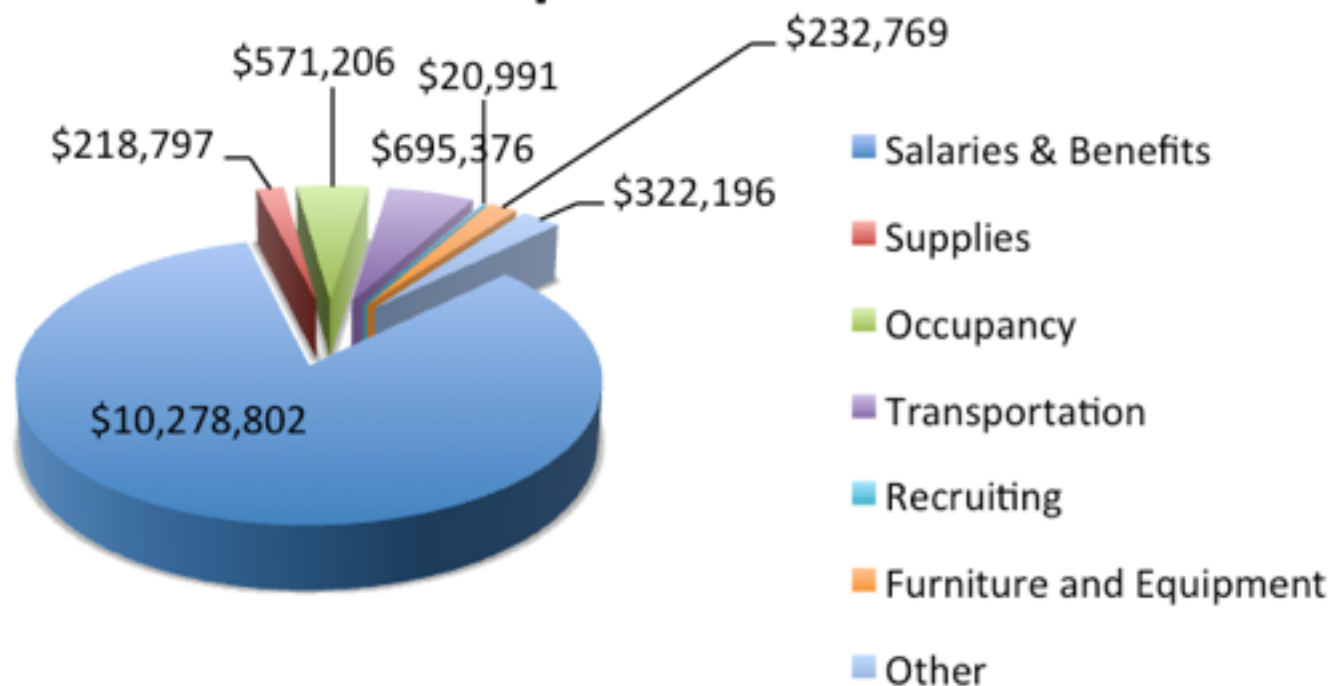
# FINANCIAL RESULTS

JULY 1, 2013 - JUNE 30, 2014

## Funding



## Expenses



# THANK YOU!

ARLENE CALIGIURI

BILL KNAPP

DOYLE BURN

EFCO

EMC INSURANCE COMPANY

FISERV FOUNDATION

HY-VEE, INC.

IOWA ONE GIFT

ITA

JACK LUHRING

JIM COWNIE

JIM SHAFFER

KNIGHTS OF COLUMBUS

MARK HESTON

NATIONAL INSTRUMENTS

NATIONWIDE UNITED WAY

POLK COUNTY BOARD OF SUPERVISORS

PRAIRIE MEADOWS RACETRACK & CASINO

ROBERT LABORDE

RUSSELL JENSEN

THE JOHN RUAN FOUNDATION

TRUIST COMPREHENSIVE DISTRIBUTION

W. T. & EDNA M. DAHL TRUST

WELLS FARGO COMMUNITY SUPPORT CAMPAIGN

YVONNE HARWARD



# 2014

# BOARD OF DIRECTORS LINK ASSOCIATES



TAMMY KERRIGAN  
BEARENCE  
PRESIDENT



MARK HESTON  
LIFE CARE SERVICES,  
LLC.  
1ST VICE PRESIDENT



TIM GEHM  
BANKERS TRUST  
2ND VICE PRESIDENT



AMY BETHEL  
UNITYPOINT HEALTH  
SECRETARY



STEVE SCHMIDT  
BEARENCE  
TREASURER



RUSSELL JENSEN  
JENSEN CONSULTING  
PAST PRESIDENT



NATHAN OVERBERG  
AHLERS & COONEY



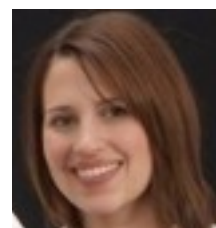
LORI WIEDERER  
HOLMES MURPHY



SCOTT BRENNAN  
DAVIS BROWN  
LAW FIRM



RON HANSON  
RUAN



ALLISON PENDROY  
LIFE CARE SERVICES,  
LLC.



NICK PELLEGRIN  
AHLERS & COONEY



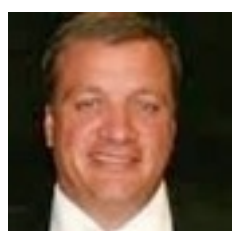
STEPHANIE STRAUSS  
IOWA ALCOHOLIC  
BEVERAGES



RUSS LEWTON  
RYAN COMPANIES



TONY STEVERSON  
DES MOINES POLICE  
DEPARTMENT



TONY DAHM  
COCA-COLA



JIM MILLER  
MORGAN STANLEY

# 2014

# LINK ASSOCIATES FOUNDATION



STEVE SCHMIDT  
BEARENCE  
PRESIDENT



RUSSELL JENSEN  
JENSEN CONSULTING  
VICE PRESIDENT



LORINDA PETERS  
SECURITY SNAPSHOT  
LLC.  
TREASURER



HAROLD TEMPLEMAN  
RETIRED  
SECRETARY



TIM GEHM  
BANKERS TRUST



CHRIS HAVILAND  
GROUP BENEFITS, LTD.



JIM SHAFFER  
RETIRED



JIM LANGIN  
MUTUAL OF OMAHA BANK



# LONG-TERM VOLUNTEERS 2013-2014

RANDY ANDERSON

ANGELA DAVIS

JEFF KAMAN

STEVE ELLINGSON

LINETTE HASTIE

ARLENE HENG

KATHY HIATT

BROCK PRUSHA

TOM HARMSSEN

KARI HARMSSEN

MARILYN DICKSON

DONALD DICKSON

DINA HULSCHER

IN ADDITION TO OUR ACTIVE LONG-TERM VOLUNTEERS, WE HAVE SPECIAL EVENT AND SCHOOL GROUPS (DOWLING, HOOVER, ROOSEVELT) THAT GIVE THEIR TIME.

TOTAL HOURS =2,106.75\*

\*THIS NUMBER DOES NOT INCLUDE THE HOURS GIVEN BY CORPORATE OR UNITED WAY AFFILIATED GROUPS.



LINK ASSOCIATES  
1452 29TH STREET  
WEST DES MOINES, IA 50266

515-262-8888 PHONE  
515-225-1631 FAX  
[WWW.LINKASSOCIATES.ORG](http://WWW.LINKASSOCIATES.ORG)

## MISSION, VISION, VALUES

MISSION  
PROVIDING PEOPLE WITH INTELLECTUAL DISABILITIES OPPORTUNITIES TO ACHIEVE THEIR  
PERSONAL GOALS

VISION  
LINK ASSOCIATES WILL BE THE RECOGNIZED LEADER IN  
PROVIDING QUALITY SERVICES TO  
PERSONS WITH MENTAL DISABILITIES

VALUES  
DIGNITY AND RESPECT  
QUALITY SERVICES  
CARING ENVIRONMENTS  
PERSONAL CHOICE  
LONG TERM COMMITMENT